

# ELOK 9-SERIES

## Snib Sliding



Satin Brass



Electro Black



Gun Metal



Stainless Steel



**Bluetooth**



**Pinpad**



**RFID Card**



**Mechanical Key**

### Features:

- Four Finish Options
- Exterior Rated IP66
- 28mm & 35mm Sliding mortices available
- Same Great E-LOK App
- E-LOK Gateway Compatible
- Integrated Wi-Fi option (905W Only)
- Auto-Lock or Passage mode
- Suits Both Wooden and Aluminium Doors
- Key Override on Underside (no key cover)



Gun Metal

# The E-LOK 9-SERIES

*a few shades smarter*

*New Zealand's Original Lock for narrow joinery has evolved. The new E-LOK 9-SERIES arrives in two new shades for the discerning homeowner. The battery life has been improved and the new IP66 Rating means it can withstand those unforgiving storms.*

The 9-Series is powered by the same E-LOK app which has proven itself to be the most user friendly and intuitive interface on the market. Experience the convenience of an integrated Wi-Fi version, where you can control the lock remotely via Wi-Fi without needing a separate gateway module\*.

E-LOK 9-Series for Sliding Doors, is purpose built to expand your homes' indoor-outdoor flow. This is still the same 9-Series we know and love, but it comes paired with Snib-Levers to allow for installation on narrow styles, and a 28, or 35mm backset sliding door mortice lock, along with an adjustable strike for the door frame.

\*905W Only



IP66 weather rated



Four easy unlock methods



Suits both Alu & Wooden Doors



Mechanical key override

## Quick Tech Specs:

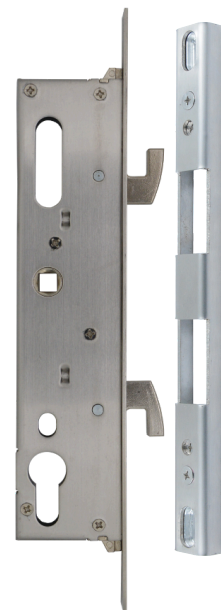
**Batteries:** 6V (4xAA Alkaline) included  
**Compatible With:** E-LOK App and E-LOK Gateway Wi-Fi Access  
**Suitable Door Thickness:** 30mm - 70mm  
**Max Num. Pincodes:** 200 qty  
**Max Num. RFID Cards:** 200 qty  
**Operating Humidity:** 10-95% Humidity  
**Product Size (body only):** 310mm(H)\*39mm(W)\*23mm(D)  
**Product Size (snib lever):** 50mm (L)  
**Available Backsets:** 30, 35, 40, 45, 50, 55, 60, 70mm Back Set & 28, 35mm Sliding Lock.  
**9-Series Residential Warranty:** 2 Year Mechanical & Electrical

### Common Variants:

915-28s-SS (snib leverset with 28mm sliding backset)  
915-35s-BLK (snib leverset with 35mm sliding backset)

### Finish Options:

Electroplate Black -BLK  
Stainless Steel -SS  
Satin Brass -SB  
Gun Metal -GM



35mm Sliding Backset with included adjustable strike