

ELOK

705/707 & 715/717 User Manual



E-LOK 7-Series

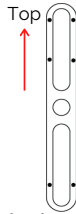
Summary Check List:

1. Crop out done as per template.

2. Arrow on spindle hub points to lever/hinges.



3. Check rubber gasket installed correctly, with lugs pressed in tight, to ensure seal around backplate edge.



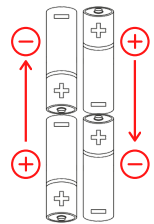
4. Ensure split pin is installed, or sprung spindle pin is seated correctly, securing spindle to spindle hub.



5. Ensure screw casing bolts and through bolts tightened.

6. Ensure power cable wire installed correctly and not bent or crimped in door.

7. Check batteries installed in correct position.



Professionally Installed by:

PIN code: _____

Date: _____

____/____/____

E-LOK 7-Series

Please Note:

- Keep the included mechanical keys in a convenient place such as an Elements Hardware 1236-BLK Key Safe
- Replace the batteries when they have low voltage
- Read this User Manual carefully before installing your 7-Series Smart Lock
- **Use Alkaline 1.5v Batteries Only**



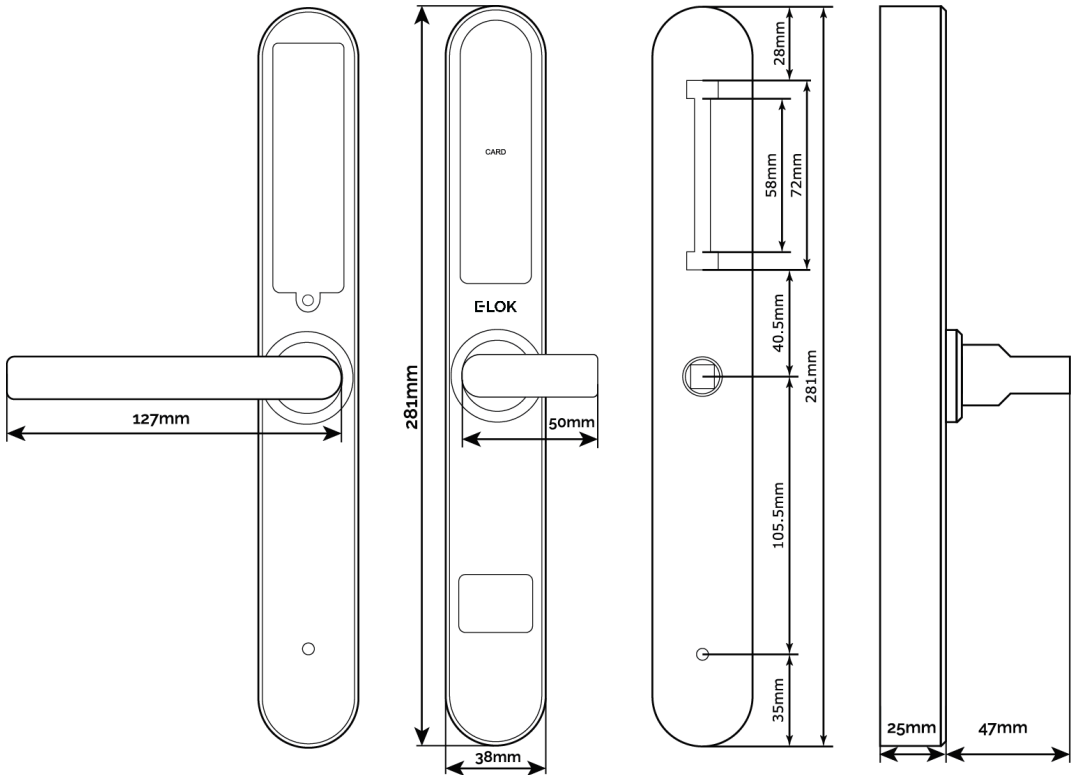
1236-BLK Shown:

Contents Page:

- Pg 5.** 7-Series Body Dimensions
- Pg 6.** Mortice Lock Options
- Pg 7.** 7-Series Packing List
- Pg 8.** 7-Series Specifications
- Pg 9.** Adjusting the Handing
- Pg 10.** Arrow on Spindle Hub
- Pg 11.** Installation: Steps 1-4
- Pg 12.** Installation: Steps 5-7
- Pg 13.** Factory Reset: If you're the admin
- Pg 14.** Factory Reset: Other methods
- Pg 15.** First Set-Up
- Pg 16.** Bluetooth Unlock + PIN Code Management
- Pg 17.** RFID Card & Fingerprint Management + Vague Code
- Pg 18.** Remote Unlock + e-Key Management
- Pg 19.** Admin Passcode + Unlock Records
- Pg 20.** Battery Percentage + Lockset Clock
- Pg 21.** Passage Mode
- Pg 22.** Extra Lock Settings 1
- Pg 23.** Extra Lock Settings 2
- Pg 24.** Extra Lock Settings 3
- Pg 25.** Extra Lock Settings 4
- Pg 26.** Transferring Lockset Ownership
- Pg 27.** 7-Series Handle Functions
- Pg 28.** Unlock with Mechanical Key
- Pg 29.** E-LOK Gateway Pg. 1
- Pg 30.** E-LOK Gateway Pg. 2
- Pg 31.** E-LOK Gateway Pg. 3
- Pg 32.** E-LOK Gateway Reset, Transfer Ownership & Specs
- Pg 33.** Maintenance Guide
- Pg 34.** Important Notes
- Pg 35.** Contact

E-LOK 7-Series

7-Series Body Dimensions:



- 705 & 707 model shown on left with Standard Lever, rear panel
- 715 & 717 model shown in mid-left with Snib Lever, front panel
- Mounting points shown mid-right
- Body and lever projection shown on right

E-LOK 7-Series

Common Mortice Lock Options: All Mortice templates are available online at E-LOK.com

Back set:

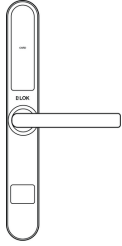


Back set:

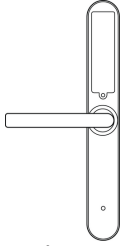


E-LOK 7-Series

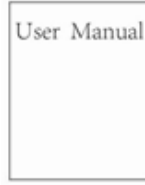
7-Series Packing List:



Front Panel
QTY 1



Back Panel
QTY 1



User Manual
QTY 1



(not included
with 705-0,
707-0, 715-0
& 717-0)

Mortice lock
QTY 1



Faceplate &
Striker Screw QTY 4



Mechanical Key
QTY 2



RFID Card
QTY 3



Split Pin
QTY 1

Your E-LOK will come with either,
Sprung Pin Spindles, or Spindles/Split
Pin.

For door
thickness:
30-50mm

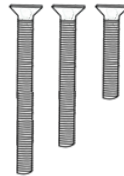


Short Spindle
QTY 1

For door
thickness:
50-70mm



Long Spindle
QTY 1



Fixing Screws 1
QTY 3



Screw Casing
QTY 2



Gasket
QTY 2



Sliding Screw
QTY 2



Fixing Screws 2
QTY 2



Gateway
(Optional)

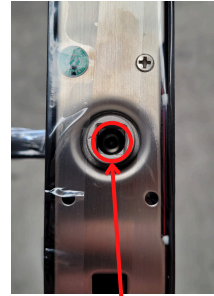
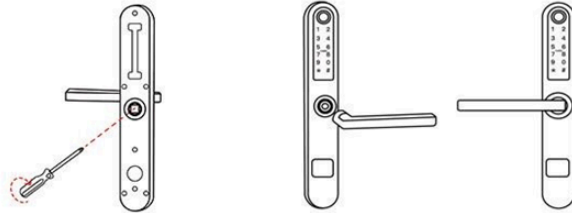
E-LOK 7-Series

Specifications:

Product Name:	E-LOK 7-Series Smart Lock
Operating Application:	E-LOK App
Manufactured Material:	304 Stainless Steel
Finish Styles:	Electroplate Black, Stainless Steel
Unlock Methods:	PIN Code RFID Card E-LOK App Mechanical Key Fingerprint (707 and 717 Models Only)
Max Num. Locks on App:	Unlimited
Max Num. PIN Codes:	200 PIN codes
Max Num. RFID Cards:	200 RFID Cards
Max Num. Fingerprints:	200 Fingerprints
Batteries:	6V (4 x AAA Batteries) - Must be Alkaline
Operating Temp:	-10°C - +50°C
Operating Humidity:	10% - 95%
Suitable Door Thickness:	30mm - 70mm
Suitable Door Types:	Aluminium Door, Wooden Door
Product Size:	280mm(H) x38mm(W) x25mm(D)
Available Mortice lock Sizes:	30, 35, 40, 45, 50, 55, 60, 70mm Back Set & 28,35mm Sliding Lock
7-Series Residential Warranty:	2 Year Mechanical & Electrical
E-LOK Gateway Warranty:	2 Year
Weather Rating:	Exterior Rated IP 55 (705 and 715 Models Only)

E-LOK 7-Series

Adjusting the Handing:



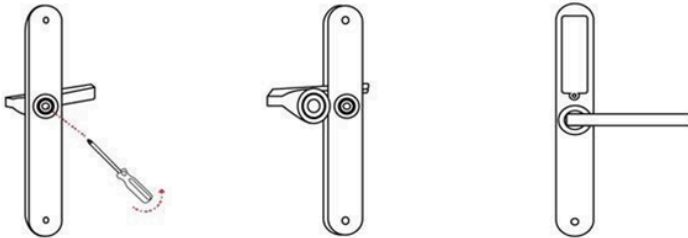
Location of screw shown:

To turn the handing on the front panel, loosen the inner screw. **(new model E-LOKs come with hex screws, not Phillips).**

Remove the handle.

After adjusting the direction of the handle, insert it into the handle seat, re-tighten the inner screw and ensure arrow is pointing in the direction of the handle (above image).

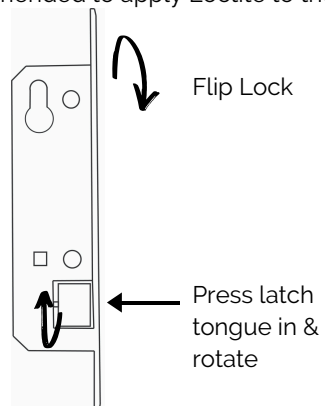
Check the inner-screw is tight before moving onto the rear panel.



Complete the same process for the rear handle. Ensure inner screw is tight when re-attaching handle to the panel. It is recommended to apply Loctite to the handle screw.

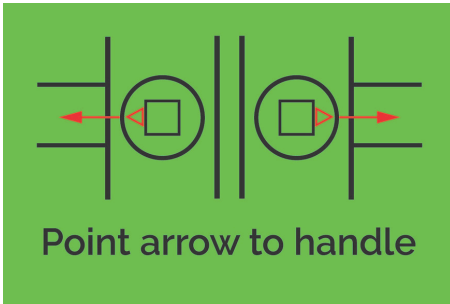
To reverse the Mortice Lock:

- Turn lock upside down
- Push latch into lock case
- Holding latch in lock case, turn 180 degrees
- Release latch to full extended position



Arrow on Spindle Hub & Split Pin:

The arrow on the spindle hub must point in the direction of the handle (point in direction of hinges)



If this step is missed and the arrow is pointing:

Upwards: Whilst outside, the deadbolt won't throw when lever is lifted up.

Opposite: The E-LOK will appear to stay unlocked permanently.

If you are experiencing these symptoms please ensure the arrow alignment is correct + split pin is installed. If Sprung Spindle is in use, check to see if that is seated correctly.

If your E-LOK was working fine for 4-12 weeks and now won't open from the outside, the Split Pin may have not been installed, or Sprung Pin was not seated correctly.

To test:

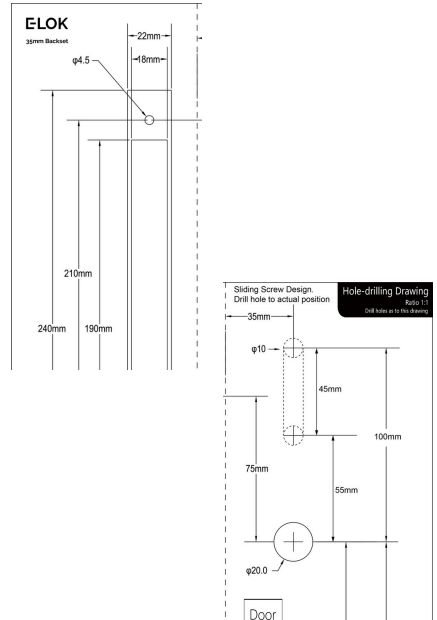
Open door from inside, lift the inside handle up, check if deadbolt has thrown. Holding the outside handle, lift the outside handle up, check if deadbolt has thrown. If the deadbolt throws with the inside handle and not the outside handle, the Split Pin is not installed or Sprung Spindle is not seated correctly.

E-LOK 7-Series

Installation:

Step 1.

If you are retrofitting into an existing mortice hole, this step may not be required. If you are fitting the 7-Series into a new hole, take the included mortice template and cut the holes into your door. Your E-LOK 7-Series comes with screws to suit both wooden and aluminium doors.

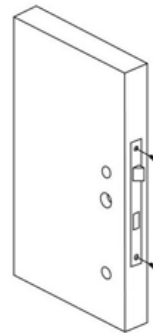


Step 2.

On the door face, you'll be required to make holes to suit the top screw, spindle and bottom screw of the E-LOK Smart Lock. Note the top fixing screw is adjustable. Please cut to actual screw position.

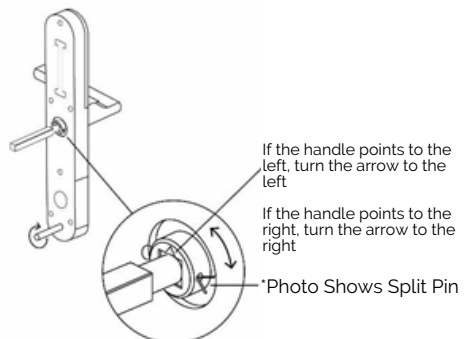
Step 3.

Install the mortice lock into the door. Ensure fixings are tight and straight.



Step 4.

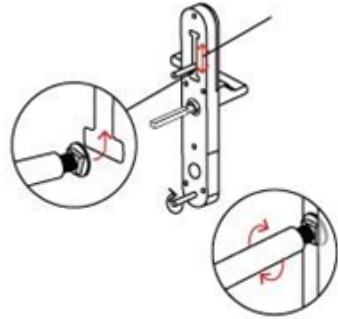
Install the spindle into the outdoor handle. Ensure that before you install, check the arrow is pointing in the direction of the handle. Use the Sprung Pin on Spindle, or Split Pin to secure spindle in place.*



Installation:

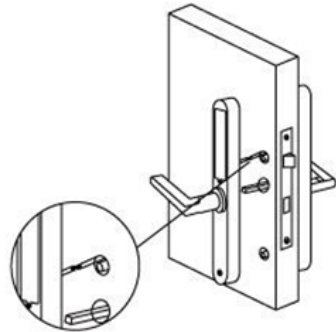
Step 5.

Now install the adjustable height screw into the screw casing, then screw into the adjustable screw slot. Now install bottom screw casing onto screw. Now attach the included rubber gaskets to both the front and back handle.



Step 6.

Now you are ready to connect the front and back panel. Remove the battery case from the back panel. Connect the cable, ensure there is space in the door for it. You may have to create a cavity in a wooden door for this.

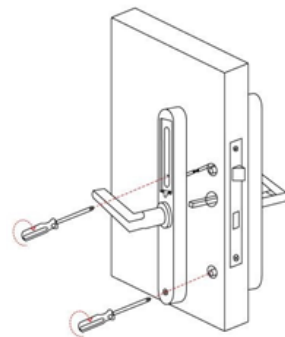


Step 7.

Screw the back panel to front. Depending on your door width, use the appropriate included fixings screws for the top and bottom fixing points.

Install Batteries into battery case and screw the battery cover back into place.

E-LOK 7-Series Smart Lock should be ready to go!



E-LOK 7-Series

Factory Reset: (if you are admin and in Bluetooth range)

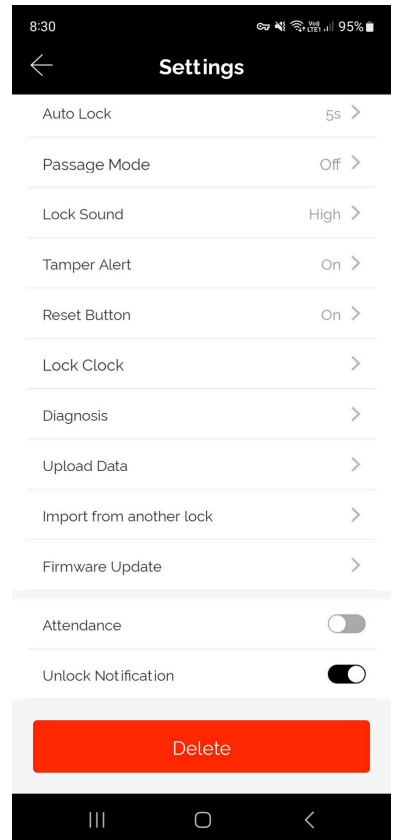
Normal Factory Reset:

You must be admin and in Bluetooth range of the Smart Lock in order to complete factory reset.

You can factory reset your E-LOK by going into the lock settings and tapping "Delete".

This will fully factory reset the E-LOK Smart Lock.

From here, you can set the E-LOK Smart Lock back up to your phone.



Manual Factory Reset

Manual reset:

If you are not admin of the E-LOK Smart Lock, or you wish to perform a manual factory reset, remove battery cover and complete:

Long press the reset button on the bottom left side in battery case until you hear "Please input initialization passcode". Now input code "000#" on the keypad.

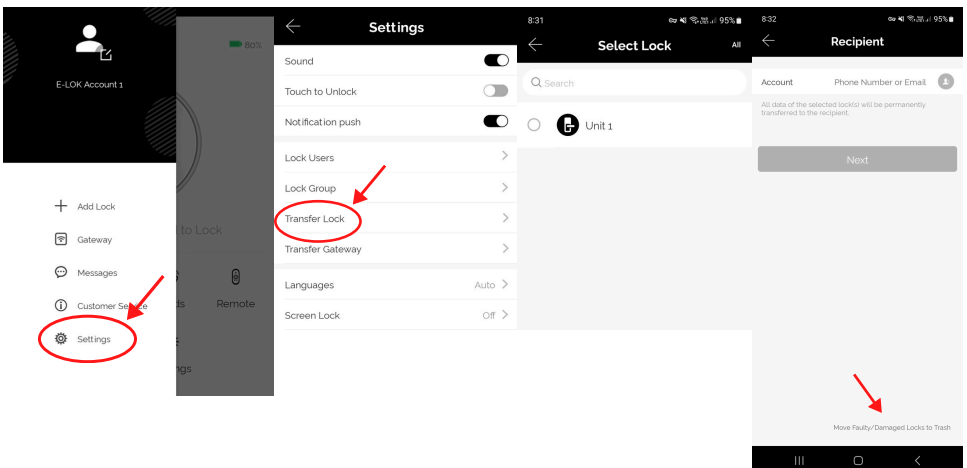
The system reset will be complete. From here you can link the E-LOK Smart Lock to your phone via the E-LOK App.



Please Note: The default code before connecting to the E-LOK, is **123456#**.

Trouble shooting:

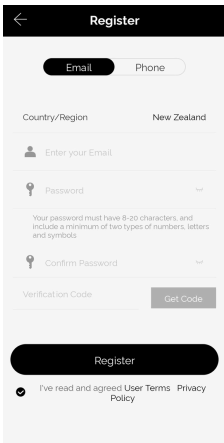
If you manual reset whilst you were admin of the E-LOK, transferring Lockset to Trash will complete the reset of the E-LOK:



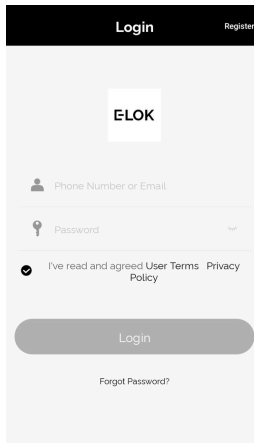
E-LOK 7-Series

First Set-Up:

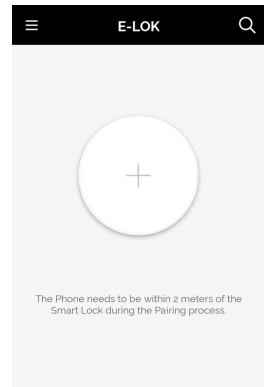
Get the E-LOK App by visiting E-LOK.com for the app download link



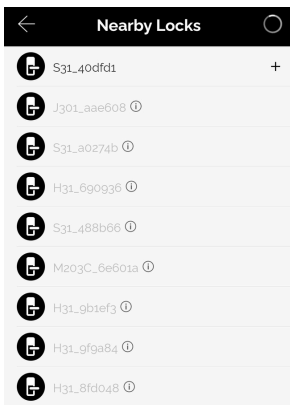
1. Register an account with E-LOK using either phone number or email.



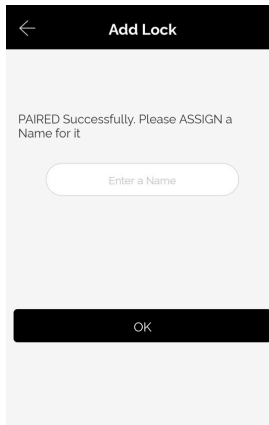
2. Login to your account.



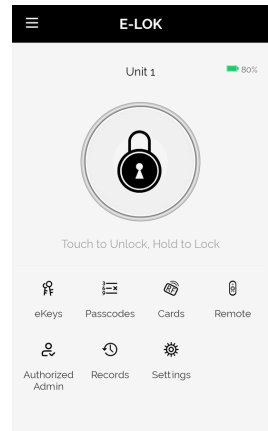
3. Ensure E-LOK 7-Series is on and Bluetooth enabled on phone, connect to lock. Tap Keypad & + sign to pair



4. Select your E-LOK 7-Series. Note it will not be called the model of your E-LOK Smart Lock. It is usually the one at the very top in a black font.



5. Rename your E-LOK 7-Series to your preference.



6. View your E-LOK lock management page.

E-LOK 7-Series

Bluetooth Unlock + PIN Code Management

Bluetooth Unlock:

After you've connected your phone to your E-LOK Smart Lock, open the lock management page and tap the "Unlock" icon. This will unlock your Smart Lock via Bluetooth and it will automatically re-lock itself according to the set auto lock timer.

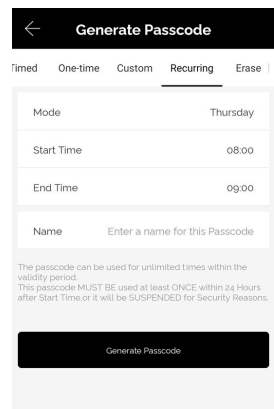
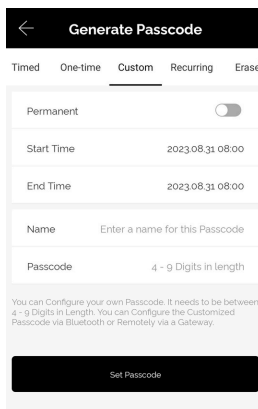
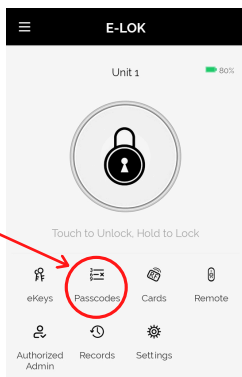


PIN code Management:

E-LOK App allows you to set 200 unique PIN Codes. You can set a range of different types of PIN Code. The best is to choose 'Custom' to create yours. Set it to permanent, name it and set your preferred sequence. (4-9 digits).

Recurring PIN Code allows you to set a PIN Code that only works on certain times and days. Either set the PIN Code to work one day a week, daily, weekdays or weekends -during set hours. The app also allows for one-timed and timed PIN Codes.

Using your Pin Code: enter your pin code followed by "#" to unlock your E-LOK.

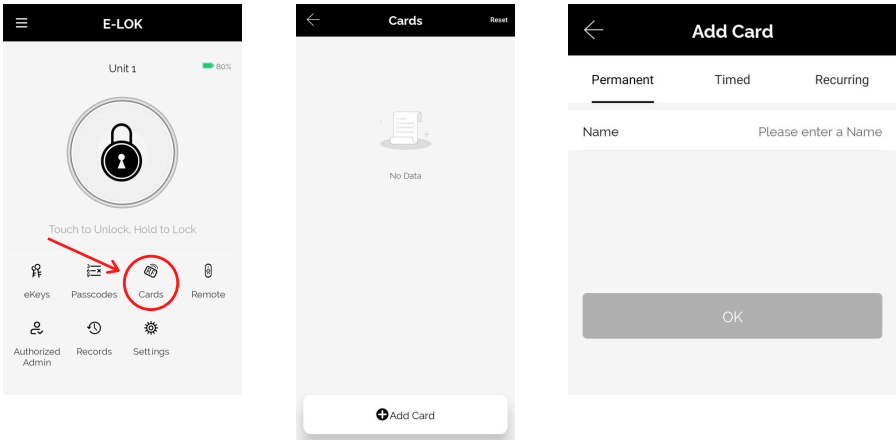


E-LOK 7-Series

RFID Card + Vague Code + Fingerprint Management

RFID Card Management:

E-LOK App allows you to store 200 unique RFID Cards. To set up one of the three included with your E-LOK 7-Series Smart Lock, tap "Cards" on the lock management page, tap Add Card. Choose Timed, Permanent, or Recurring, and name them individually and add them to your key-ring for easy usability.



E-LOK Vague Code:

E-LOK's allow you to enter a scramble code, or vague code, of up to 16 digits. For example, if the PIN-Code was 3579, 9287**3579**1122 could be entered and the E-LOK would unlock. The reason this works, is because it still includes the actual PIN-Code somewhere in the sequence. Use this if you want to make it harder for any prying eyes to figure out your PIN-Code!

Fingerprint Management (707 and 717 Models Only):

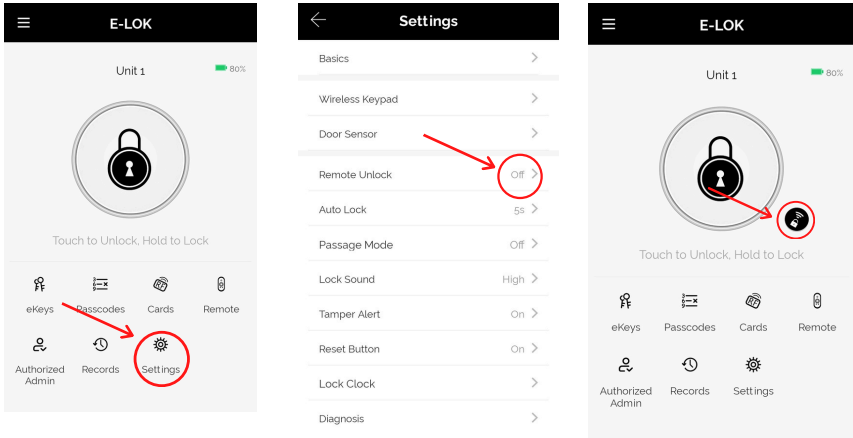
E-LOK App allows you to store 200 separate fingerprints to unlock your Smart Lock. To add your fingerprint tap "Fingerprints", tap "Add Fingerprint". From here you can name and manage when the fingerprint will unlock your Smart Lock.. Next, follow the prompts to add your fingerprint to your Smart Lock.

E-LOK 7-Series

Remote Unlock + e-Key Management

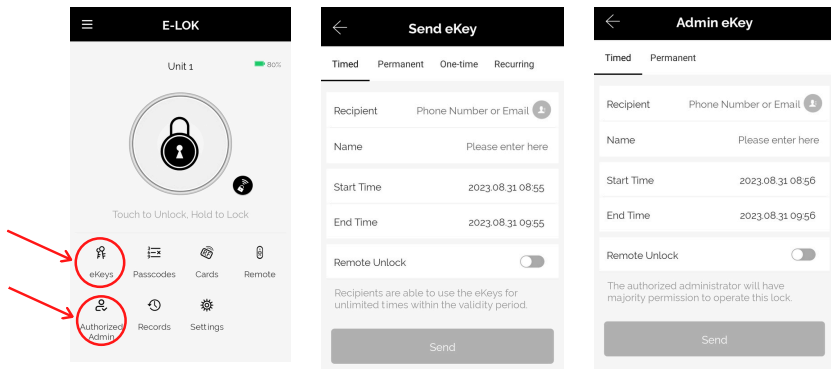
Remote Wi-Fi Unlock (only with E-LOK Gateway Add-on).

After you've connected your phone to your E-LOK Smart Lock and connected your E-LOK Gateway, open the lock management page and ensure Unlock Remotely is enabled in the settings. Now tap the Unlock icon. This will unlock your E-LOK via Wi-Fi. If Auto Lock is on in the E-LOK settings, it will lock automatically. Otherwise you can hold down the lock button to lock it remotely



e-Key Management:

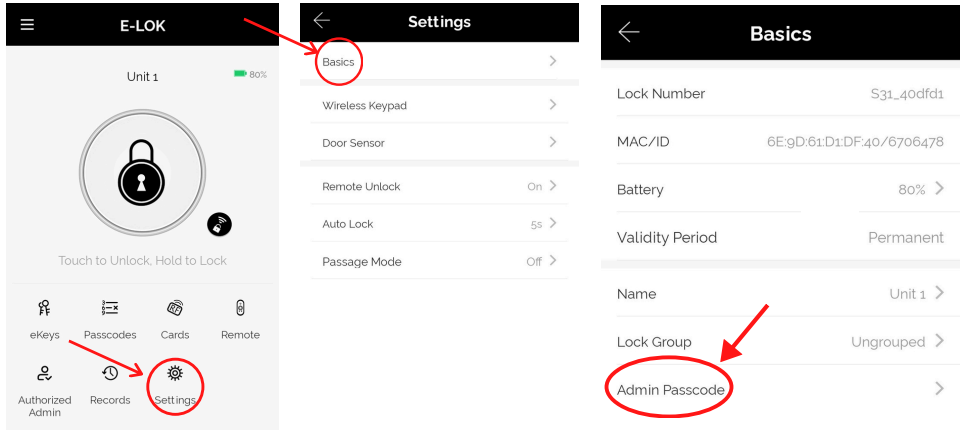
An e-Key gives another person with an E-LOK App Account access to view and use your E-LOK 7-Series. Tap on the "eKey" icon on the lock management page. This allows you to send an electronic key to another person with an E-LOK App account. You can either set the account to be an Admin or a User. If you want them to be an Authorized Admin, click "Authorized Admin" in the E-LOK management home page. Then click "create admin", or, if it is a user eKey, click "send eKey".



Admin Passcode + Unlock Records

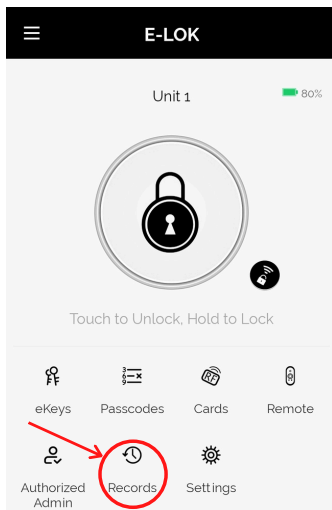
Admin Passcode:

E-LOK comes with an admin passcode. To view this tap "Settings" on the lock management page, tap "Basics" and then tap "Admin Passcode". Keep a note of this passcode.



Unlock Records:

E-LOK App records which passcodes were used to unlock the E-LOK and when. You can view these records by going into the "Records" menu on the lock management page. You can see the name of the unlock code, eg "John", what time it was used and what type of unlock code was used. With App versions 1.2 and above, you can view failed unlock attempts and see which code was used.

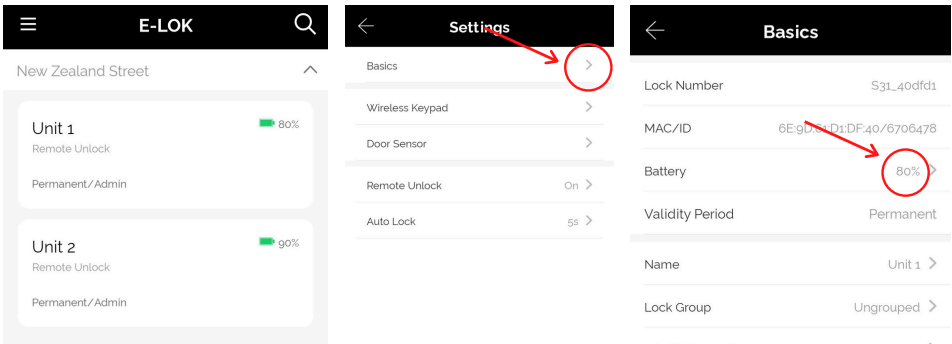


E-LOK 7-Series

Battery Percentage + Lockset Clock:

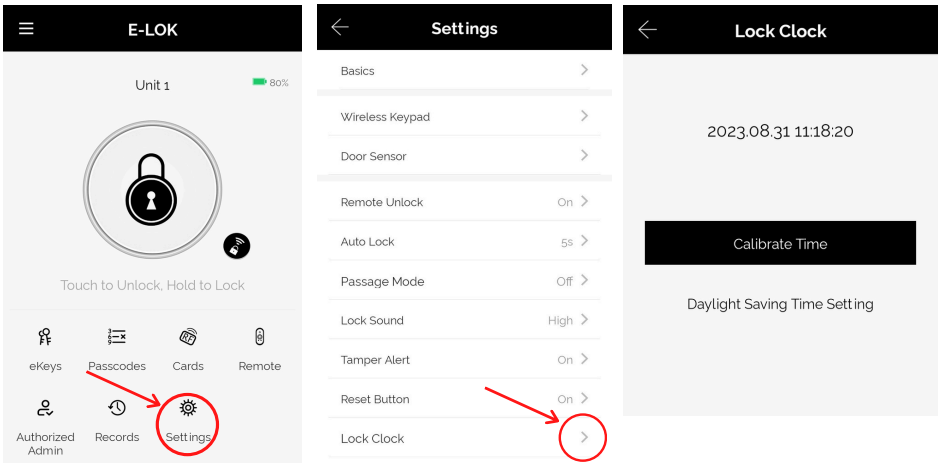
Check Battery Percentage:

E-LOK App allows you to check the battery percentage of your E-LOK in two easy ways. In the lock select page, the app will give you a percentage overview to the nearest 5%. You can also find a more accurate battery level in the settings of the Smart Lock. Tap into "Settings", then "Basics" and then view your battery percentage.



E-LOK Lockset Clock:

For the unlock records to be synched correctly, the Lockset clock needs to be calibrated. To do this, Tap into "Settings" then "Lock Clock". Here tap "Calibrate Time". Your E-LOK Smart Lock will communicate with the E-LOK App and set the correct time. This will ensure the operation/unlock records are accurate.

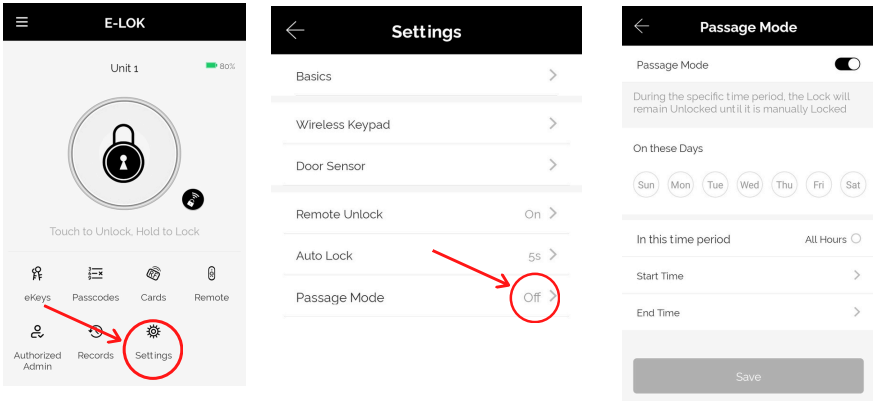


E-LOK 7-Series

Passage Mode:

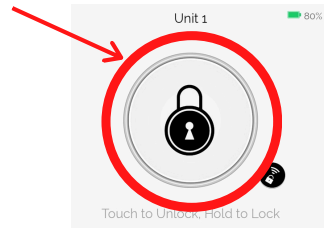
Passage Mode:

E-LOK App allows you to manage and control passage mode on your E-LOK 7-Series Smart Lock. Tap into "Settings", "Passage Mode", then choose the days and hours you want your E-LOK Smart Lock to be in passage mode. A common application for this is having a Smart Lock on passage mode Mon-Fri 9am-5pm for an office building. As a security feature, passage mode only begins after an unlock method (pincode, RFID Card etc) has been used on the smart lock.



When you leave your house or office with passage mode set on, there are two methods to lock your E-LOK Smart Lock correctly:

Open up the E-LOK App, long press "Lock" button on E-LOK app. This will Lock your Smart Lock until you unlock it with pinpad, fingerprint, RFID Card Etc. Ensure you lift handle to engage bolt.



Once exited, long press "#" Key on pinpad. This will lock the E-LOK Smart Lock until you unlock it again. This method is perfect as it doesn't require the use of a phone. Ensure you lift handle and engage bolt.



To unlock the E-LOK Smart Lock again, please use preferred unlock method, eg Pinpad, RFID FOB, App or Fingerprint (707 and 717 Models Only).

Passage Mode + Remote

Manual Passage Mode:

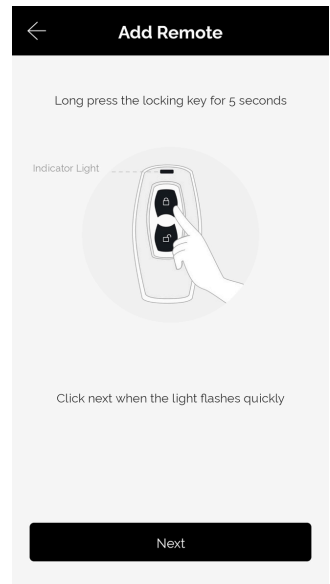
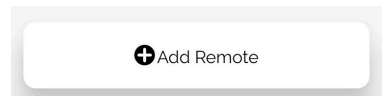
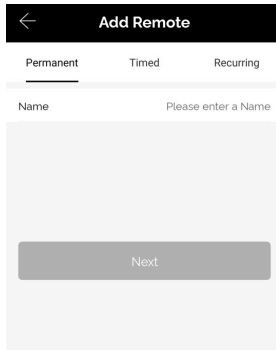
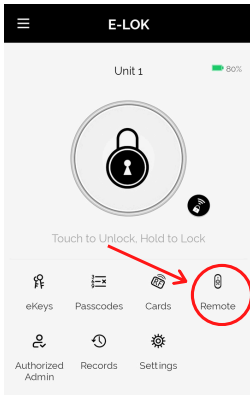
E-LOK's can be put into passage mode manually also, directly from the keypad with no app intervention needed. Simply input your code and click unlock, and before it auto locks again, input **"123#"**, the lock should now be set to passage mode.

To take it out of passage mode and lock it again, simply choose one of your locking methods to do so. Holding down the **"#"** key is a preferred option.

E-LOK Remote:

E-LOK's have a function where you can connect a remote to the lock, so you can unlock and lock it via bluetooth.

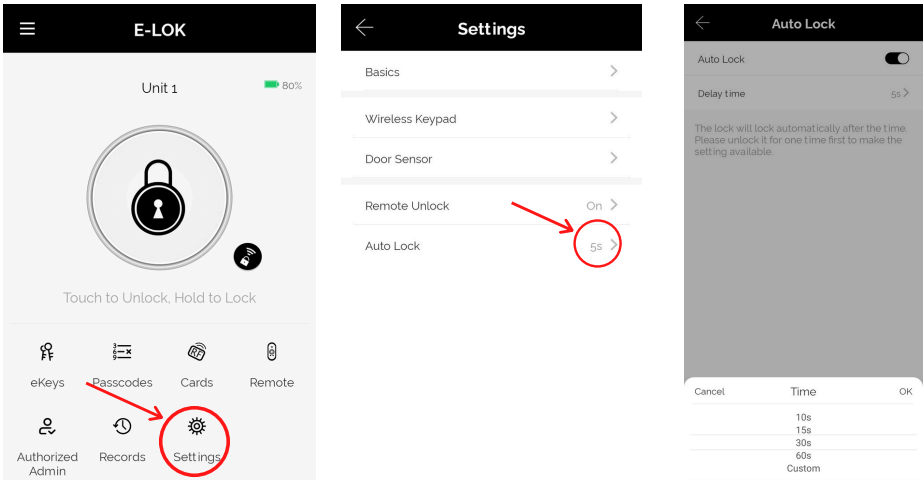
First, go to Remote, on the E-LOK management page. Next choose permanent, timed, or recurring. Then, click add remote. Follow the instructions on the screen to add the remote to your E-LOK.



Extra Smart Lock Settings:

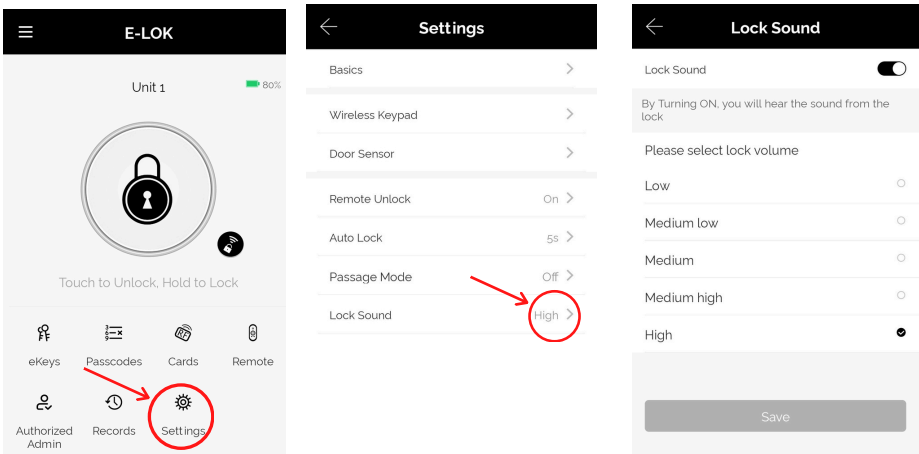
Auto Lock:

E-LOK App allows you to adjust the auto lock timer on the Smart Lock. This is the timer that is triggered once the Smart Lock has been unlocked using any unlock method unless passage mode is enabled. Auto lock timer is under the lock settings tab.



Lock Sound:

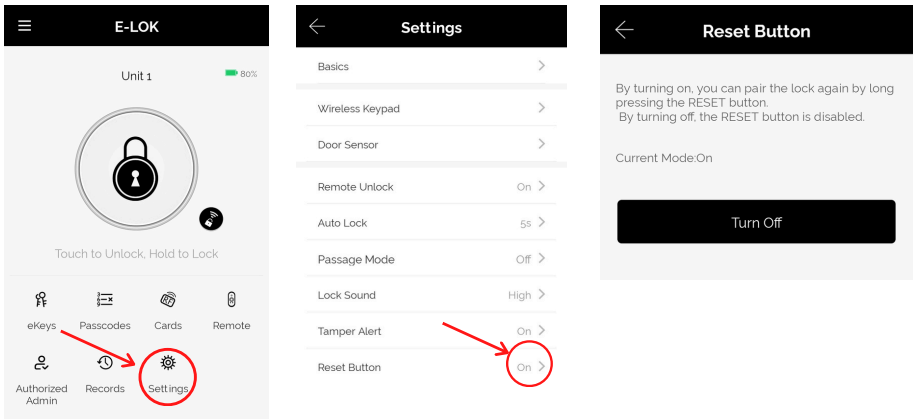
Lock Sound setting lets you enable or disable the sound coming from the smart lock when you, unlock, lock, set passage mode etc. By default Lock Sound is enabled.



Extra Smart Lock Settings:

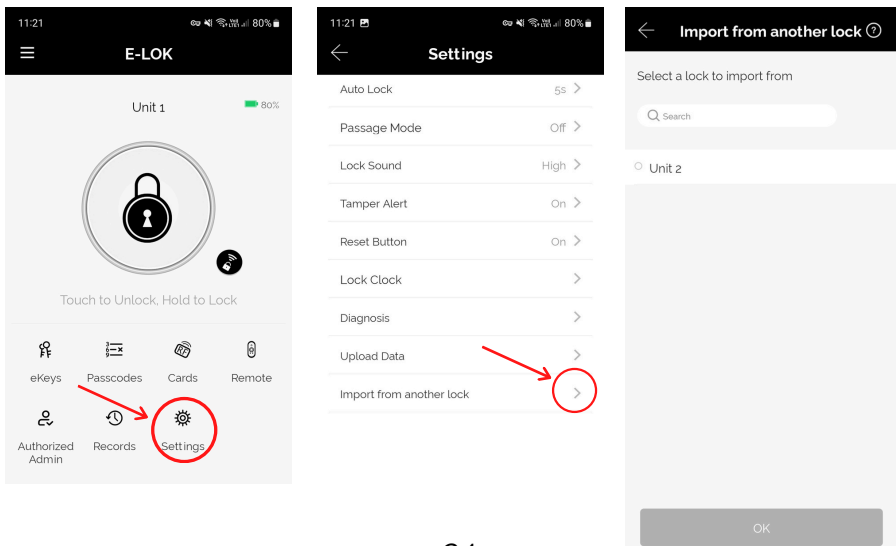
Reset Button:

With E-LOK App, you can enable or disable the factory reset button inside the battery case. Disabling this reset button will prevent someone from resetting the E-LOK Smart Lock and locking you out (apart from mechanical key). This feature works great on E-LOK's installed on Airbnb's, rentals etc.



Import from another E-LOK Smart Lock:

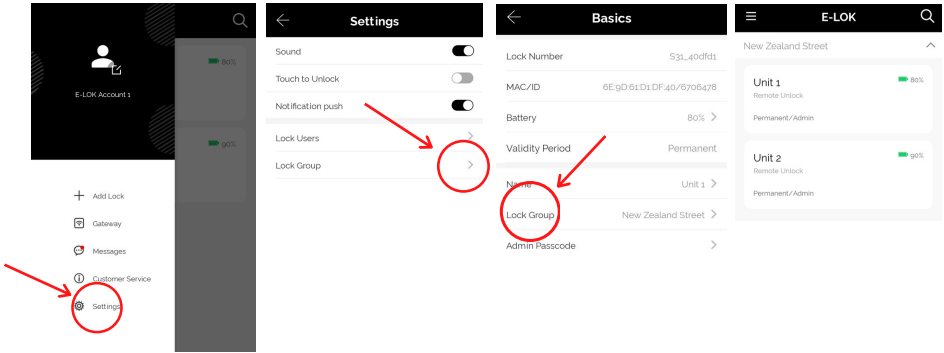
Import from another app feature allows you to sync PIN-Codes and RFID Cards between E-LOK Smart locks. If you have more than one E-LOK Smart Lock use this feature to have your PIN Code and RFID Card to work on each, without setting them up again. This feature is in the lock settings.



Extra Smart Lock Settings:

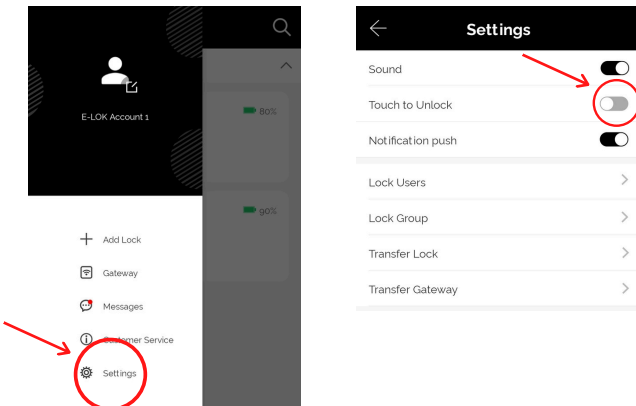
Lock Groups:

You can link E-LOK Smart Locks together in lock groups. First create a lock group in the main settings, then link a Smart Lock to the group in each individual lock settings, via Settings - Basics - Lock Group. View lock groups in the select page. This function can be used when you have multiple businesses with E-LOK's on each site.



Proximity Touch to unlock:

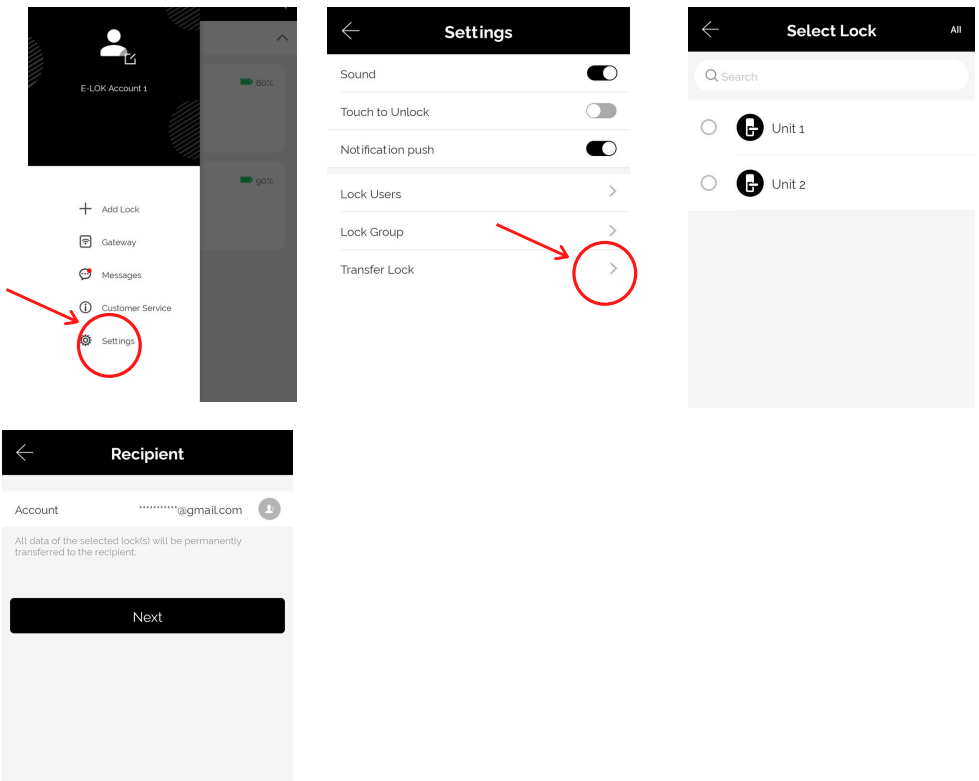
Proximity touch to unlock when enabled lets you unlock your E-LOK Smart Lock just by pressing any number on the Keypad whilst the app is open. To use this feature, enable "Touch to Unlock" in the settings tab, have your app open to your E-LOK, then press any number on the Keypad.



Transfer Lockset Ownership:

Transferring Lockset ownership can be useful in a few scenarios. What it allows you to do is give Master Admin ownership to another E-LOK App account holder. The process to Transfer Lockset Ownership is shown below:

Tap into "Settings" then into "Transfer Lock(s)". Here you can select the Smart Lock you wish to transfer ownership. You will then be required to input the receiving account's email or phone number (whichever the E-LOK App account was created with). The Smart Lock ownership will be transferred to that account

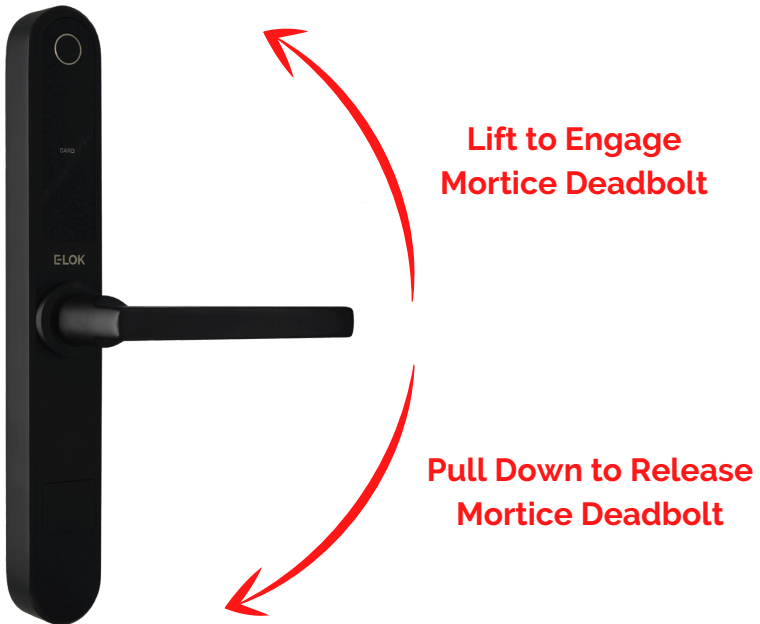


NOTE:

Transferring Lockset Ownership retains any and all PIN-Codes, RFID Cards, Fingerprints and settings previously programmed to that specific E-LOK Smart Lock.

E-LOK 7-Series

Using E-LOK 7-Series Smart Lock



Your E-LOK 7-Series Smart Lock has two handle functions:

Lift up the handle to engage the mortice deadbolt.

Pull down to unlock and release latch + deadbolt

Important Notes: When the E-LOK 7-Series automatically locks, the handle disengages from the latch, but you can still lift the handle to engage the mortice bolt. Engaging the deadbolt when the E-LOK is not electronically locked (aka in passage mode), the E-LOK will not be locked, and you could then pull down on the handle to unlock it even with the deadbolt engaged. So, the door is not locked until the handle is mechanically disengaged. With Auto Lock on, it will mechanically lock it automatically. To throw the deadbolt, this has to be done Manually by lifting the lever up.

Using your Pin Code: enter your pin code followed by "#" to unlock your E-LOK.

E-LOK 7-Series

Unlocking E-LOK 7-Series with Key

Your E-LOK comes with two mechanical keys and a slot in the front panel to use them. If you've forgotten your PIN Code or your E-LOK 7-Series batteries are flat, follow these steps to unlock it mechanically.

Press your finger into left or right side of cover, which should lever open.
Insert key to key slot.

Turn the key to shown position

Pull the handle down as it is now engaged with the latch.

If batteries are flat please replace them.



Shown on the right is the location of the mechanical key barrel, with cover removed.

The Micro USB port beside it can be used to power up the Smart Lock if the batteries fail. When connected to a power bank or battery source, the Smart Lock can be powered up and then a PIN Code, RFID Card or the app can be used to unlock it.



E-LOK 7-Series

E-LOK Gateway (only if you've purchased the E-LOK Gateway Add-On)

E-LOK Gateway allows you to transfer information and commands to your 7-Series E-LOK via Wi-Fi. It also allows you to change settings, unlock the 7-Series and receive live notifications when it is unlocked and which passcode was used.

Please note: only the **Master Admin** can set-up an E-LOK Gateway for a Smart Lock.

E-LOK Gateway should be plugged in via the included USB-C cable.

It must be:

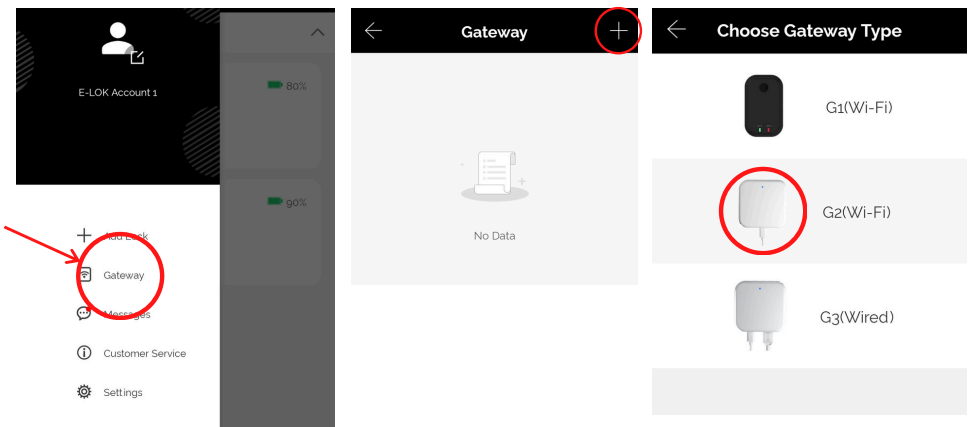
- Near a Wi-Fi router
- Near the E-LOK 7-Series

(Around 5-10 meters from each or as close as possible).

If the E-LOK Gateway is not near one or both, connection may be poor and the E-LOK Gateway may not function as expected.

To add the E-LOK Gateway to the E-LOK App follows these steps:

Open the left menu on the E-LOK App. Tap "Gateway". Tap "+" Sign. Select "G2"



E-LOK 7-Series

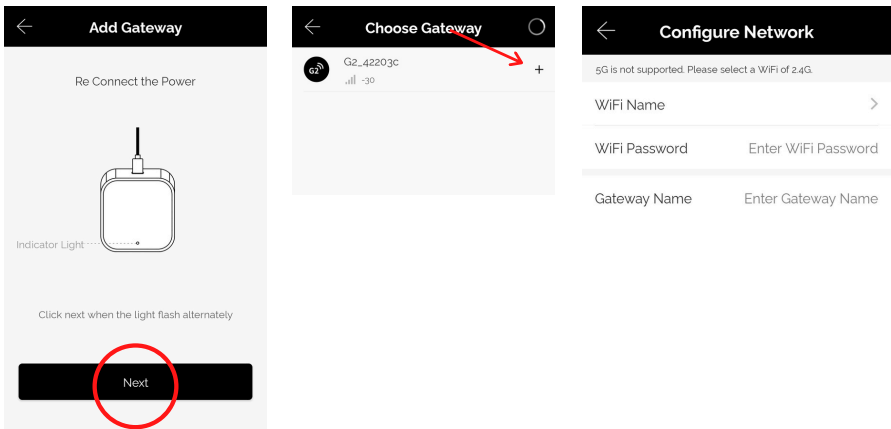
E-LOK Gateway (only if you've purchased the E-LOK Gateway Add-On)

Plug in E-LOK Gateway. The light should flash red and blue - this means its ready to connect.

Tap "Next" then Tap "G2"

Configure your network (2.4GHz only), input Wi-Fi password and name the E-LOK Gateway.

This will have your E-LOK Gateway set-up on your home network and linked into the app and your 7-Series Smart Lock.



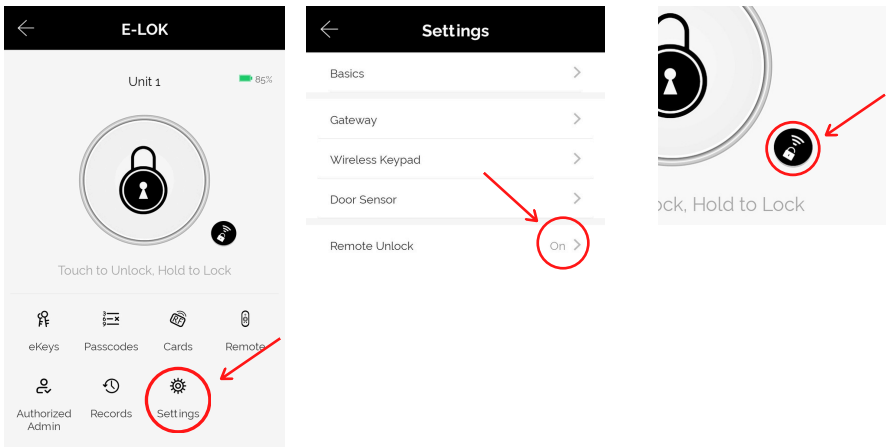
The E-LOK Gateway will now scan for an E-LOK 7-Series to connect to. You can have multiple E-LOK's connected to one E-LOK Gateway. To see what locks are near your gateway, go to Gateway, Tap the connected Gateway of your choice, Tap Nearby Locks.



E-LOK 7-Series

E-LOK Gateway (only if you've purchased the E-LOK Gateway Add-On)

Last step is to ensure the Unlock Remotely feature is enabled on your 7-Series. Open your lock management, tap into "Settings", locate the "Unlock Remotely" menu and ensure this is enabled.



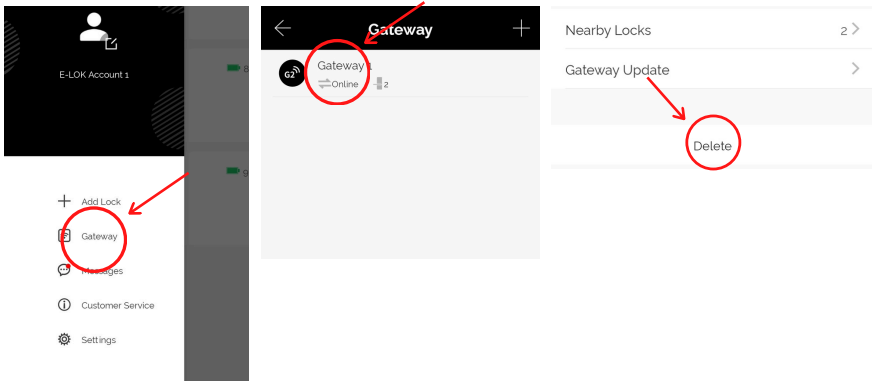
You will now be able to control your E-LOK 7-Series from the app remotely via Wi-Fi, whether you're at work or out-of-town. You can add, change or delete unlock codes. The remote unlock feature will now be available. You can also receive live notifications for when your E-LOK 7-Series was unlocked, and which code was used to unlock it.

If the E-LOK Gateway refuses to connect or displays error messages; disconnect it from the power source for at least 15 minutes. Then retry setting it up,

E-LOK Gateway Specs + other info

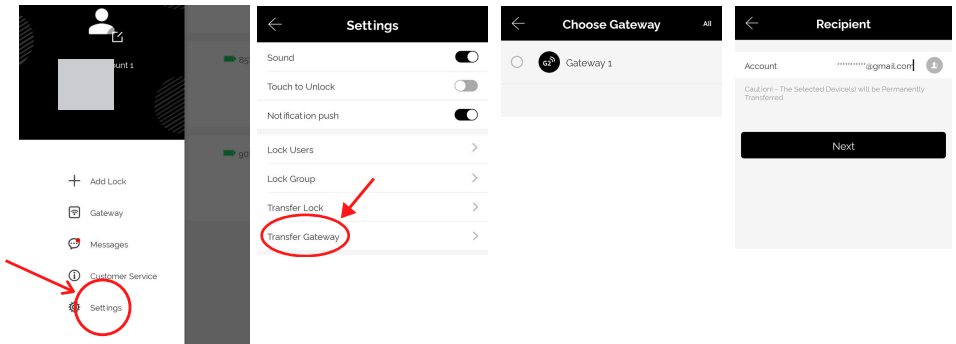
Reset E-LOK Gateway:

If you require factory reset your E-LOK Gateway follow the below process. Removing the Gateway from your app will unlink the Smart Locks that are connected to it. The Smart Locks will work as usual via Bluetooth.



Transfer Gateway:

Similar to Transferring Lockset ownership, you can transfer the ownership of Gateway's setup on your account. Steps below show process. Once transferred, you will no longer have access to that Gateway.



Additional Gateway Specs:

Network: 2.4 GHz

IEEE Standard: 802.11b/g/n

Power Interface: Type-C USB

Power Input: DC5V/500mA

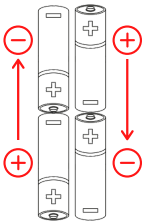
Maintenance Guide:

Maintenance should be carried out on your E-LOK 7-Series every 6 months.

Use the below guide to ensure your lock set lasts the test of time:

Every 6 months:

- Check that the screws fixing the mortice lock are tight. Check that the screws fixing the rear panel to the front panel are tight.
- Check if batteries need replacing. If battery percentage is low replace with four fresh Alkaline 1.5V AAA batteries. Diagram shown below.



- Wipe the surface of the E-LOK 7-Series Smart Lock with a cloth dampened with only water. This will help remove any dust or micro contaminants from the surface.
- If the handle feels loose or wriggles from the Smart Lock, you may have to remove the Smart Lock from the door and re-tighten the inner screw with Loctite securing the handle to either or both the front and rear panel.
- It is also a good idea to do a full factory reset of the E-LOK 7-Series Smart Lock to ensure software stays light and un-bloated.

Important Notes:

Please Note:

Fingerprint models should **only** be installed where they are well undercover from the weather.

You must use the E-LOK App to set-up your E-LOK 7-Series Smart Lock. When you first power up your E-LOK, the Smart Lock will have very limited features until you have completed the short set-up process and added at least one unlock code. You can find a link to the app on E-LOK.com

The E-LOK App allows you to manage an unlimited amount of E-LOK Smart Locks from your phone. Remember to name each E-LOK Smart Lock uniquely to ensure you don't mix them up.

The E-LOK Gateway can connect to multiple E-LOK Smart Locks. An instance where you'd need multiple E-LOK Gateway's is if one E-LOK Smart Lock is on a different site or only in range of a different Wi-Fi network.

The E-LOK App allows you to manage multiple E-LOK Gateways with their individually connected E-LOK Smart Locks. This means you can have an E-LOK Gateway at home connected to your E-LOK 7-Series Smart Lock plus one at work and manage them individually.

E-LOK App works with E-LOK 5,6,7, 8 & 9-Series Smart locks. You can have all Series linked to your app at the same time.

Contact:

If you run into trouble with your E-LOK Smart Lock please visit: E-LOK.com for further information, help and tools. If you don't find your answer on E-LOK.com use the contact box and send us an email.

You can also email us direct, by going into the Customer Service menu on the E-LOK App.

E-LOK 7-Series

Notes:

E-LOK 7-Series

Notes:

E-LOK 7-Series

Notes:

E-LOK 7-Series

Notes:

ELOK

7 - Series

User Manual

E-LOK.com

Version: 2408 E7UM